



## **BORDER AND PERIMETER SECURITY PROJECT**

## Category Flat Ground



## Border Perimeter System

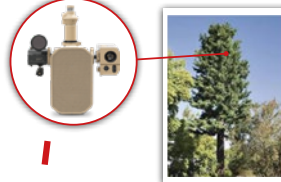
**Fiber Acoustic**  
- Detect movement



**Ground Radar**  
- At high traffic areas



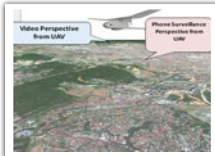
**Thermal + PTZ Camera**  
- Covert cameras



**Financial Monitor**  
- Suspicious transactions



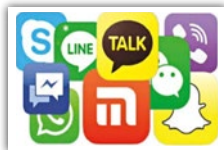
**UAV**  
- UAV for less than 15 minutes maximum response time  
- Drone detection



**Radio Detection**  
- Radio DF



**Social Media**  
- Monitor and influence social networks



**Border Security**

**Day Night PTZ Camera**

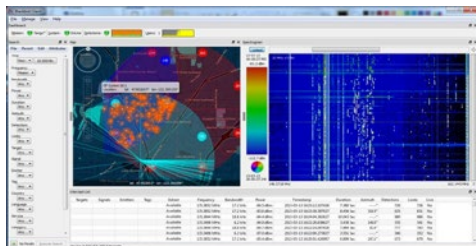


**Vehicle Patrol**  
- Dedicated patrol vehicles



## Radio Direction Finding and Intercept

Fully integrated signal search, visualization, collection, wideband recording, DF/geolocation, analysis and reporting

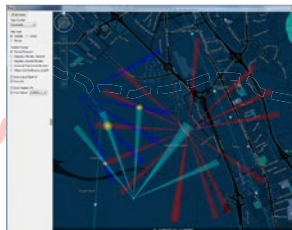
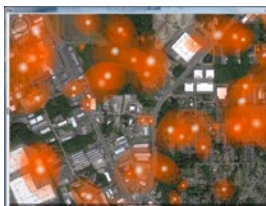


- **Client/server** architecture supports multiple remote or local clients
- **Reinvented GUI** provides automated setup and intuitive operation
- **Advanced signal detection** automatically identifies specific targets of interest
- **DF** technology provides search by direction and geolocation
- **Spectrogram Recording** provides lookback browsing / visualization of past data
- **Lookback Collection** allows user to go back in time and collect signals of interest
- **Integrated DDCs** provide multichannel realtime collection
- **Automation** facility aids operators and provides fully automated unattended operation

## Border Turnkey Protection Solution Radio-DF

Line of Bearing and Geo-location overlays

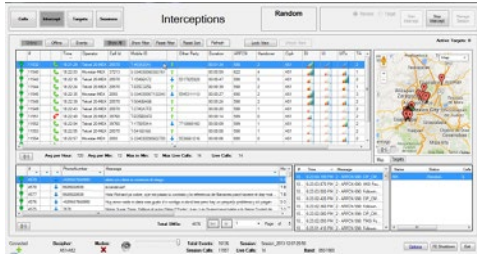
- Supports multiple map providers
- Satellite, street and terrain views
- Can integrate custom / user maps
- Online or local map server



## Cell Phone Intercept – Locate, Voice, Data, SMS

“Detect border crossing actions”

1. Passive (256 or 512 channel) 6,000 intercepts in 10 minutes
2. IMSI – without backdoors
3. Active BTS type to grab 3G calls and data.



## Buried Fiber Optic Intrusion Detection System



Buried Fiber Optic Intrusion Detection System Notifies location of threat

1. Up to 75km per processing unit in straight line configuration.
2. Within 6m resolution over the entire perimeter.
3. Signature based detection.
4. Can be used on the fence and underground with the same system.
5. No electronics or power required in the field.
6. IP based Remote control and monitoring - Software based zones.
7. Can be installed in any climate and weather conditions.

## Buried Advanced Seismic Detection System



Buried Advanced Seismic Detection System Notifies location of threat

1. Highly Covert
2. 30 km range
3. Classifies targets

