



PonTher[®]
Panoramic Thermal Radar



Panther Thermal Radar User Interface

2022-08-09 IP Address: 192.6.3.193 Speed: 13 rpm Lens: 35 mm Sistem Version: 2.0 Location: 100,100,100

1 2 3 4 5

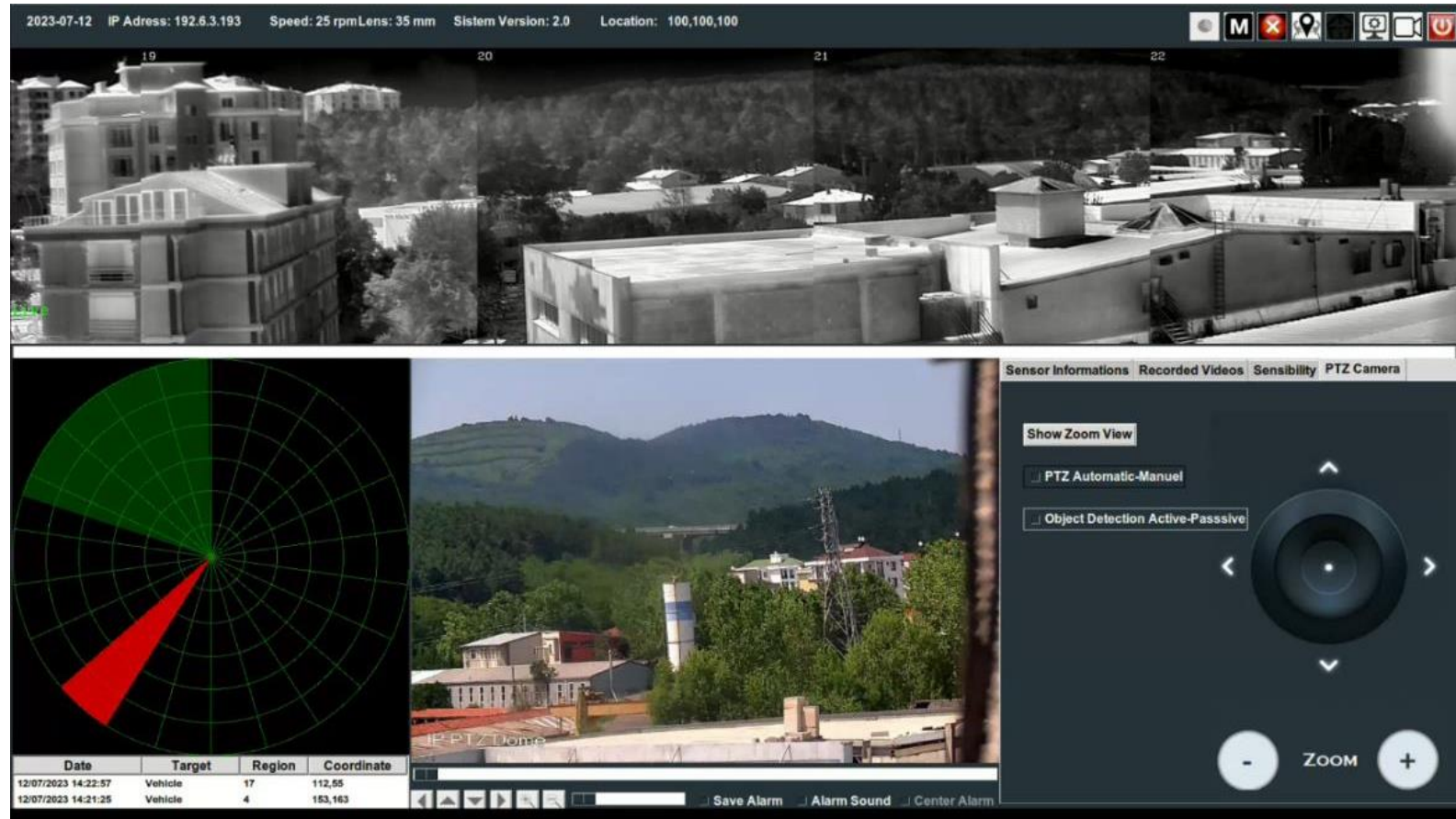
Sensor Informations Recorded Videos Sensibility PTZ Camera

Wind Speed: 20 m/s
Wind Direction: 20 °
Atmosphere Temperature: 35 °C
Atmospheric Humidity: 35 %
Atmospheric Pressure: 35 Pa
Solar Radiation: 35 W/m²
Dust Concentration: 35 ug/m³

Date	Target	Region	Coordinate
09/08/2022 14:41:51	Vehicle	11	0,511
09/08/2022 14:41:51	Vehicle	10	341,105

Save Alarm Alarm Sound Center Alarm

Panther Thermal Radar User Interface





Panther Thermal Radar Specifications

24/7 - 360° panoramic view

Human up to 1000 m,

Vehicle up to 3000 m

Fire can be detected up to 4500 m.

- Low energy consumption, grid-independent operation with Solar Panel and Windmill.
- Wi-Fi, GSM, LT, Network Connection, Satellite Connection (Optional)
- -30° C to +55° C , IP 66 Protection
- 25mm, 35mm, 50mm or 100mm Lens options.
- Distances can be up to 3 times depending on the lens size.
- Distances may vary according to Weather Conditions.
- Alarm tracking with integrated PTZ...
- Possibility to connect additional sensors depending on customer request, GPS, Acoustic etc.

Using PTZ with Panther Thermal Radar



- 2-12 Megapixel Resolution
- 30-65X Physical Zoom
- 4K Starlight Sensor
- Laser-LED spot lighting up to 300-800-1500 meters
- Automatic control from the Thermal Radar Screen, or control and monitoring from the external screen
- -45+45 degrees Vertical 0-360 degrees Horizontal rotation possibility
- Optional Special Night Color Camera with very low light level...



Wide Field Optical Shielding



Military Base Protection

