

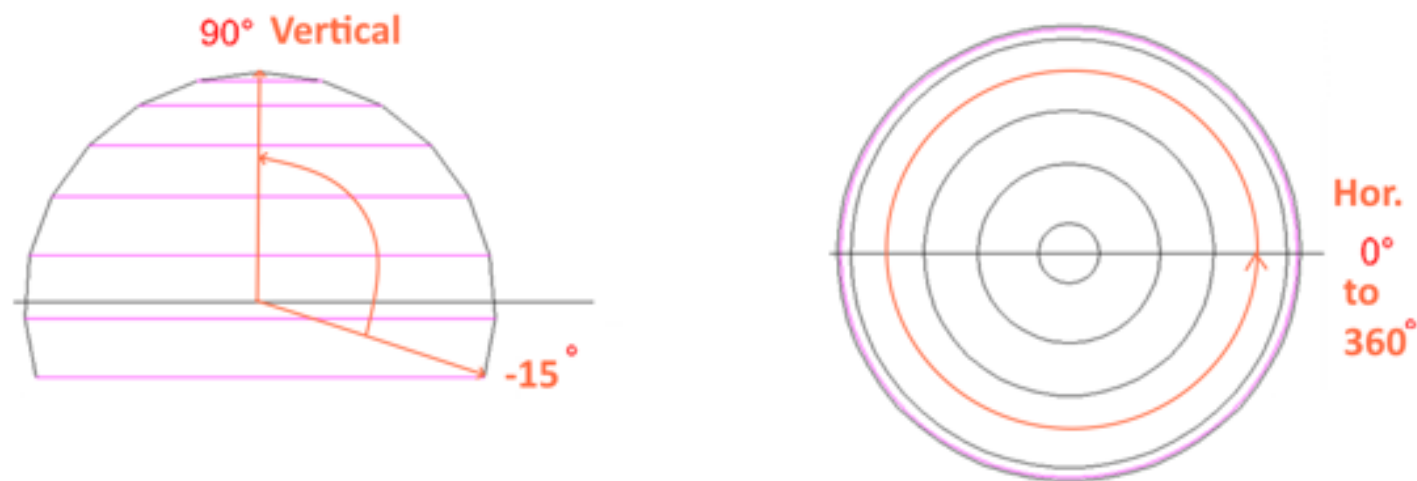
# 3D Panther<sup>®</sup>

Panoramic Thermal Radar

Deep Learning AI Based  
Electro-Optics (Land-Sea-Air)

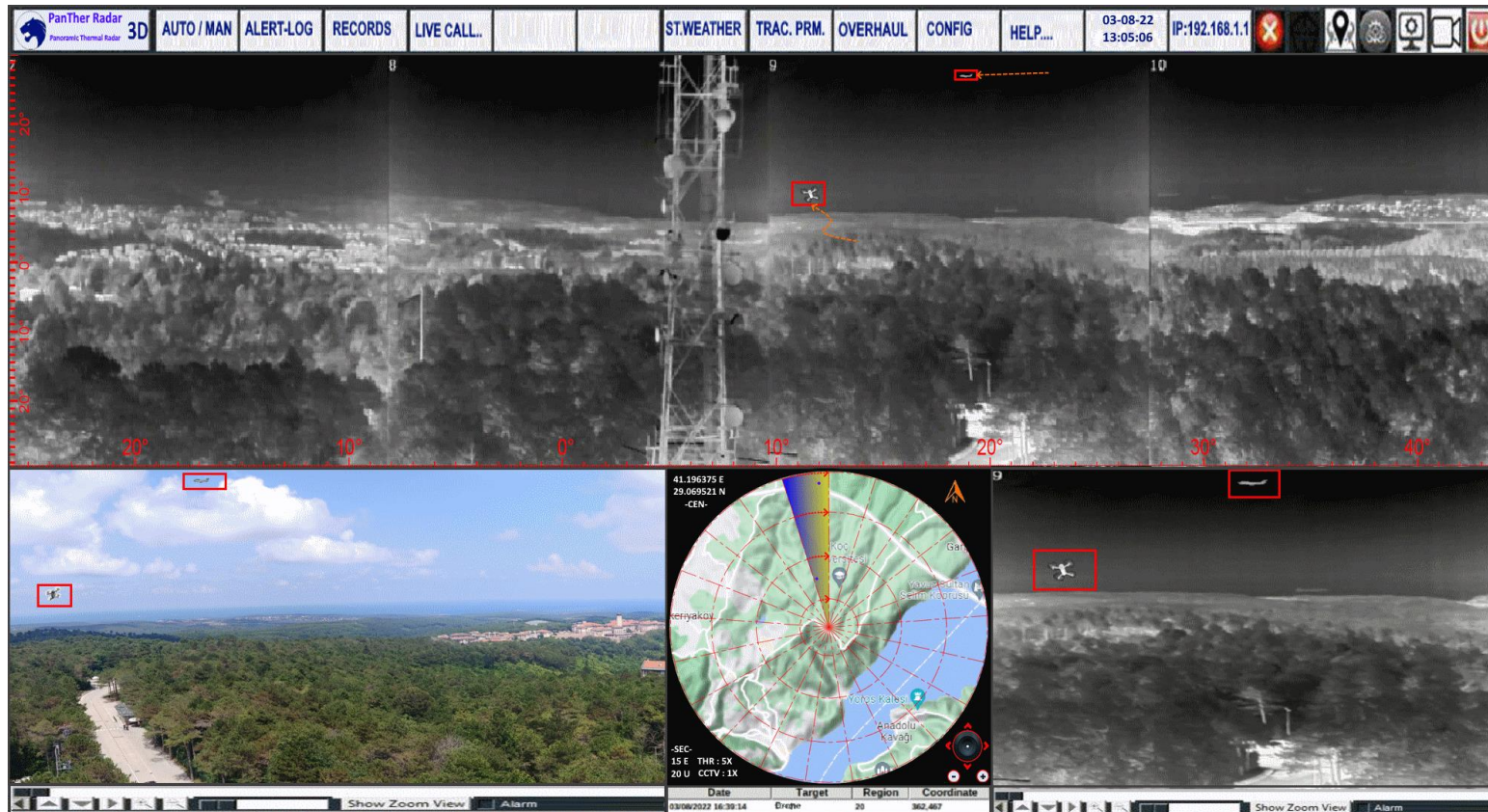


## 3D PanTher Thermal Radar



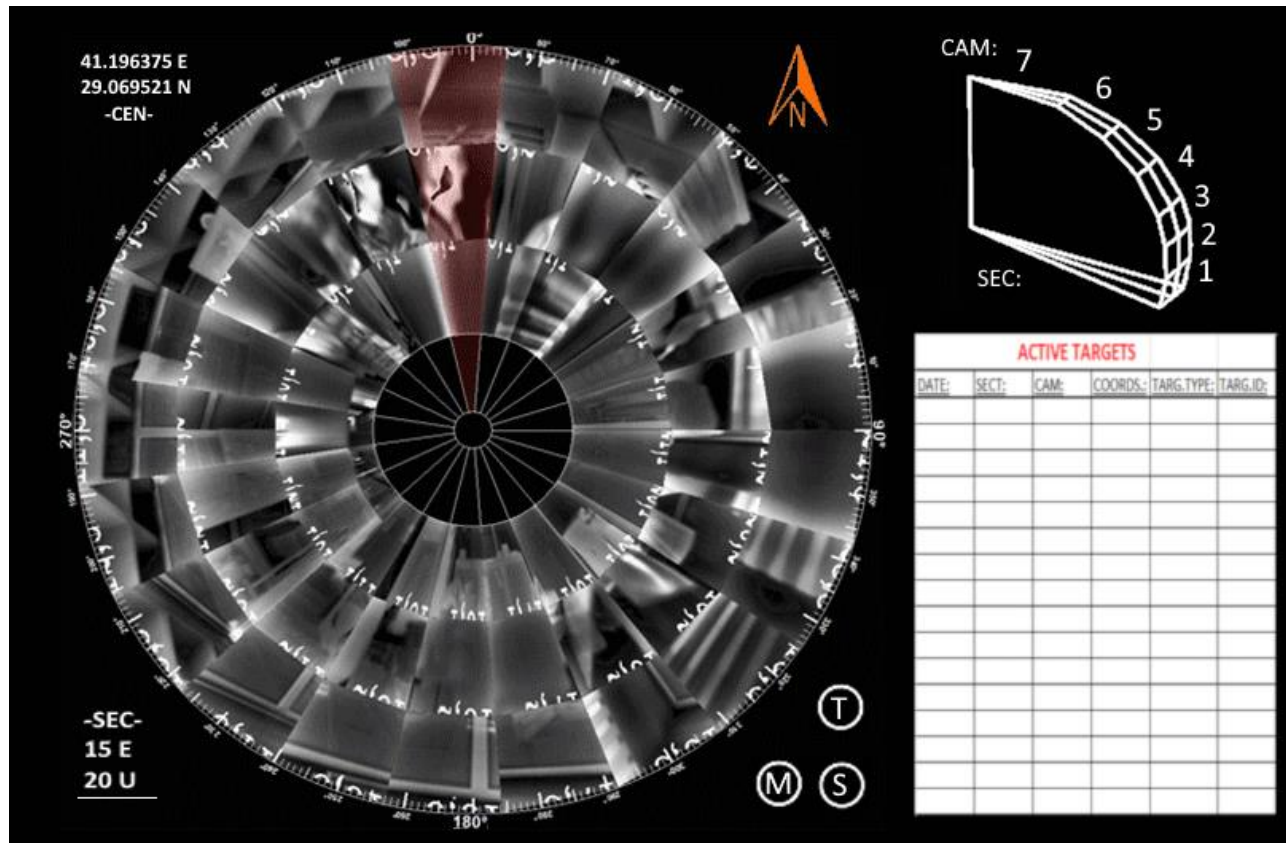
7 Thermal Camera Scans from  $-15^{\circ}$  to  $+90^{\circ}$   
Vertically and  $360^{\circ}$  Horizontally.

## 3D PanTher Thermal Radar



### 3D Thermal Radar User Interface Display

## 3D PanTher Thermal Radar



### 3D Thermal Radar Display3



## 3D PanTher Thermal Radar

- 24/7 - 360° panoramic view
- Drone up to 50---5000 m,
- Fighter Jet up to 4000 m
- Airplane up to 8000 m
- Petrol Ship up to 80.000 m
- Deep Learning Algorithm for Detection and Classification.
- 35mm, 50mm or 100mm Lens options.
- Distances, depending on the lens size and Weather Conditions.
- Alarm tracking with integrated PTZ...
- Possibility to connect additional sensors depending on customer request, GPS, Acoustic etc.

## Customer Sensors Can Be Added:

Meteorological  
Acoustic  
Altimeter  
Gas  
GPS  
Laser Rangefinder  
Proximity  
Seismic  
DAS  
Sonar  
Vs....



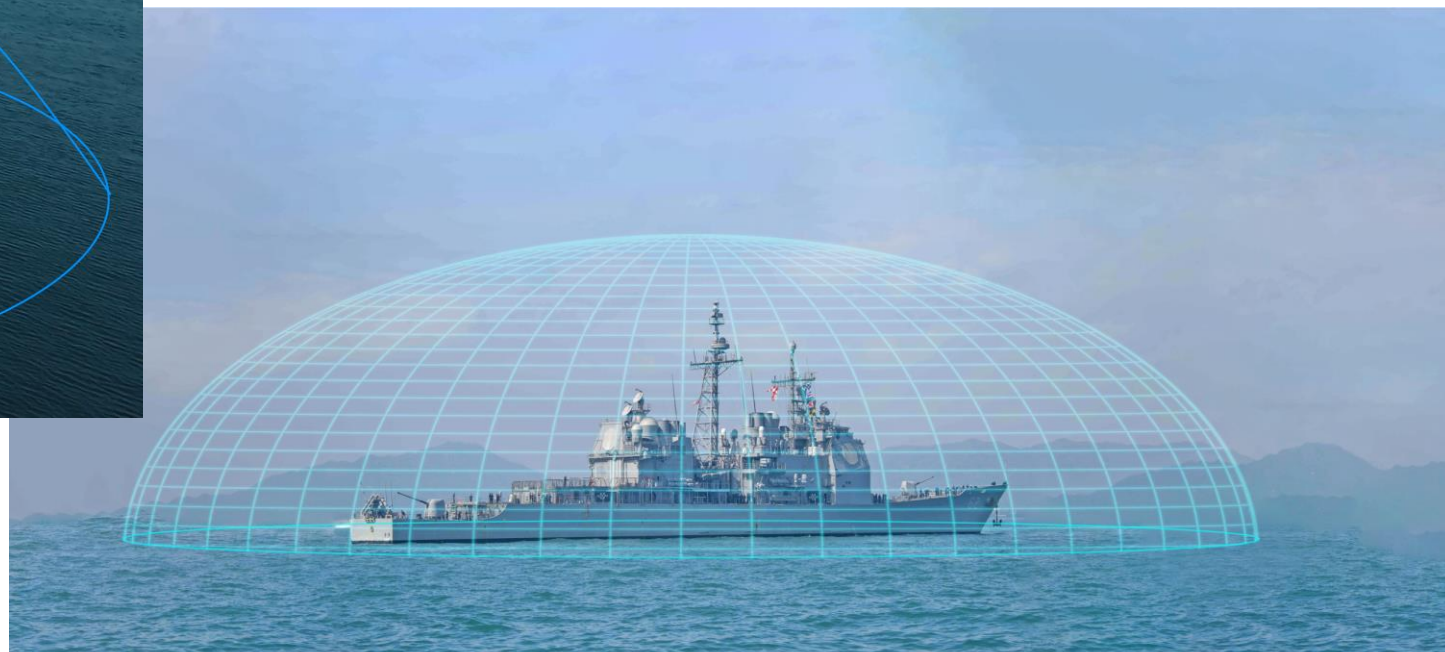
## Using PTZ with Panther Thermal Radar 3D



- 2-12 Megapixel Resolution
- 30-65X Physical Zoom
- 4K Starlight Sensor
- Laser-LED spot lighting up to 300-800-1500 meters
- Automatic control from the Thermal Radar Screen, or control and monitoring from the external screen
- -45+45° Vertical 0-360° Horizontal rotation possibility
- Optional Special Night Color Camera with very low light level...



## 3D PanTher Thermal Radar



Panther Thermal Radar 3D is used on warships with gyro. In this way, 3D Thermal Optical Moving objects (Ship-Drone etc.) around the ship can be found and tracked.